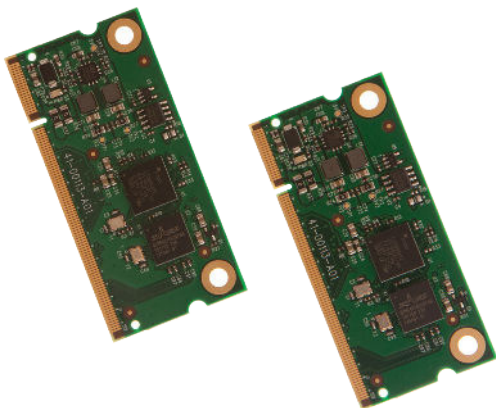


Core 2200 SO-DIMM Modules

OEM Solutions for USB extension



The Core 2200 SO-DIMM daughter cards, powered by ExtremeUSB®, provide both USB 1.1 and USB 2.0 extension in four options providing a highly flexible OEM solution over Cat X or Fiber Optics.

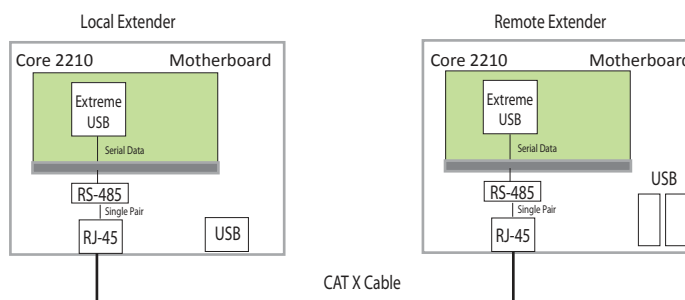
Module	USB	Media	Transmission	Reach	USB Devices
Core 2210	USB 2.0 – 12, 16, 24, or 36Mbps	Cat X – Utilizes a single pair for USB	RS-485 Driver	100m ⁺¹	Keyboards, mice, flash drives, USB 1.1 web cameras
Core 2220	USB 2.0 – 100Mbps	Cat X – Utilizes a single pair for USB	Fast Ethernet	100m+	Keyboards, mice, flash drives, hard drives, USB 1.1 web cameras, and some USB 2.0 web cameras
Core 2230	USB 2.0 – 480Mbps	Cat X – Utilizes four pairs for USB	Gigabit Ethernet	100m	All devices
Core 2240	USB 2.0 – 480Mbps	Fiber Optics	High Speed Differential Pair	500m ²	All devices

¹300m can be achieved with lower bandwidth USB devices - Keyboards, mice

²10km can be achieved with lower bandwidth USB devices - Keyboards, mice

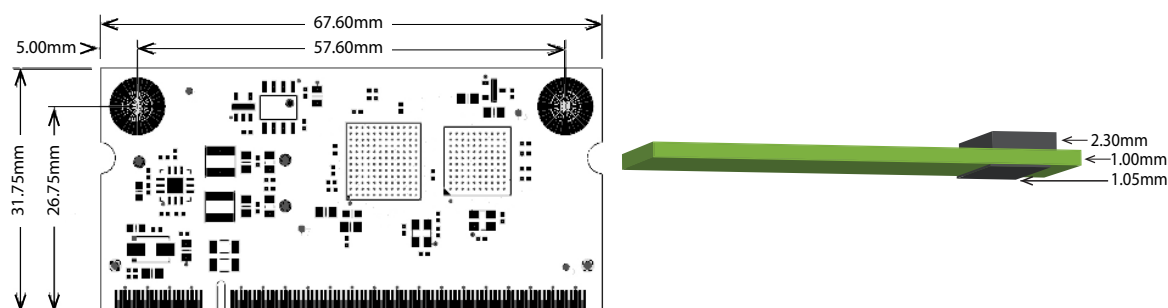
Core 2210 Application Example

Not all connections shown



Dimensions

Illustrations are approximate, not to scale



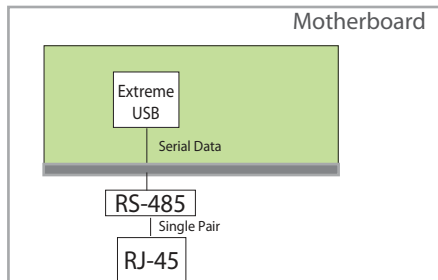
4664 Lougheed Hwy.
Suite 221
Burnaby, BC,
V5C 5T5, Canada

For more information
sales@icron.com
+1 604 638 3920

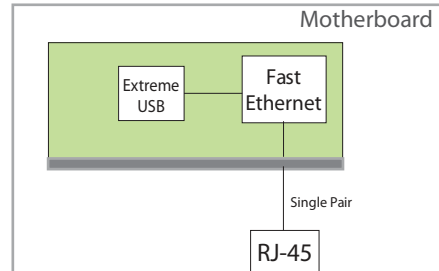
Core 2200 SO-DIMM Modules

Not all connections shown

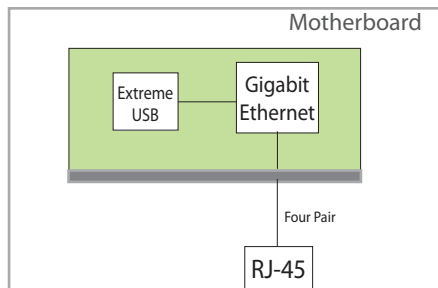
Core 2210



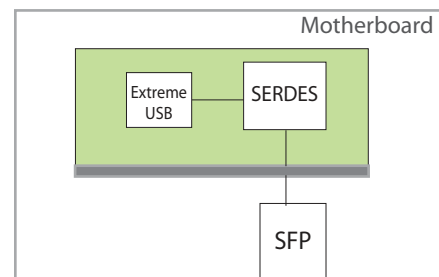
Core 2220



Core 2230



Core 2240



Ordering Information

PART #	NAME	DESCRIPTION
--------	------	-------------

A Developer Kit includes two motherboards, two SO-DIMM modules, Quick Start Guide, Developer Kit CD with reference designs, USB cable, and two power adapters. SFP modules are only included in the Core 2240 Developer Kit.

00-00293	Core 2210 Developer Kit	Core 2210 Developer Kit, 100-240V Power Adapter with No Power Cords
00-00294	Core 2220 Developer Kit	Core 2220 Developer Kit, 100-240V Power Adapter with No Power Cords
00-00295	Core 2230 Developer Kit	Core 2230 Developer Kit, 100-240V Power Adapter with No Power Cords
00-00296	Core 2240 Developer Kit	Core 2240 Developer Kit, 100-240V Power Adapter with No Power Cords
21-00055	Power Cord-NA	Power Cord, North American Plug
21-00056	Power Cord-EU	Power Cord, European Plug
21-00057	Power Cord-UK	Power Cord, UK Plug
21-00058	Power Cord-AU	Power Cord, Australian Plug

Two SO-DIMM modules are needed to complete a system. Each module can be configured as a Local Extender or Remote Extender. A Developer Kit must be purchased before modules.

10-00221	Core 2210	Core 2210 SO-DIMM Module - USB 2.0 up to 36Mbps with Serial Single Pair
10-00222	Core 2220	Core 2220 SO-DIMM Module - USB 2.0 up to 100Mbps with Fast Ethernet Single Pair
10-00223	Core 2230	Core 2230 SO-DIMM Module - High-Speed USB 2.0 with Gigabit Ethernet
10-00224	Core 2240	Core 2240 SO-DIMM Module - High-Speed USB 2.0 with Fiber Optic