

# USB 2.0 RG2304-LAN

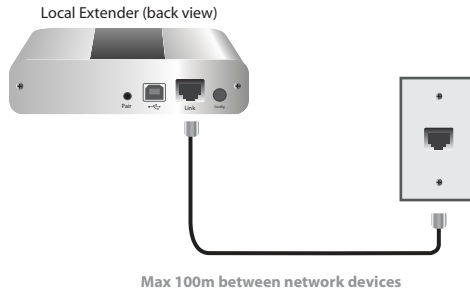
## 4-Port USB 2.0 Ethernet LAN Extender System

# Quick Start Guide

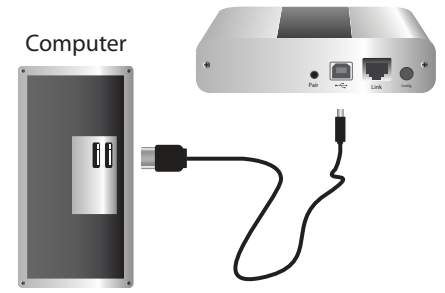
Before you get started, ensure that all the drivers required for your USB device(s) are installed.

## Network Connect

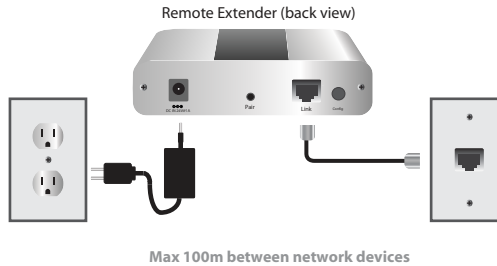
- 1 Place the Local Extender where desired and connect the Cat 5e patch cable from the Link port (RJ45) to a network switch or wall network port connected to a switch.



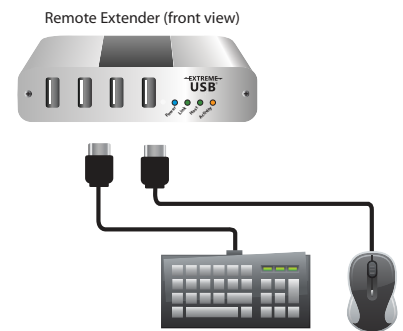
- 2 Connect the Local Extender to the computer using the included USB cable.



- 3 Place the Remote Extender where desired. Connect the Cat 5e patch cable from the Link port (RJ45) to a network switch or wall network port connected to a switch and connect the Remote Extender to a power source.



- 4 Attach USB device(s) to the Remote Extender.

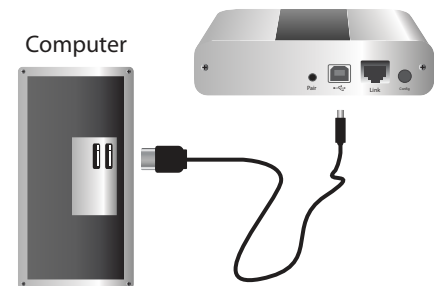


## Direct Connect

- 1 Place extenders where desired and connect the Cat 5e extension link cabling to the Link ports (RJ45) on the Local and Remote Extender.



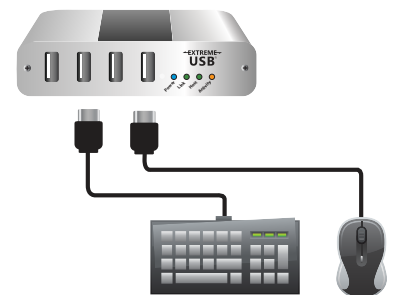
- 2 Connect the Local Extender to the computer using the included USB cable.



- 3 Connect the Remote Extender to the AC adapter and a power source.



- 4 Attach USB device(s) to the Remote Extender.



# Certification and Compliance

## **FCC Radio Frequency Interference Statement Warning**

This device complies with part 15 of the FCC Rules. Operation is subject to the following two conditions: (1) this device may not cause harmful interference, and (2) this device must accept any interference received including interference that may cause undesired operation.

## **CE Statement**

We, declare under our sole responsibility that the product, to which this declaration relates, is in conformity with European Standard EN 55022, EN 61000 and EN 55024.

## **IC Statement**

This Class B digital apparatus complies with Canadian ICES-003.



Information contained herein is subject to change without notice. 90-01048-A04