

USB 2.0 RG2224 / RG2244

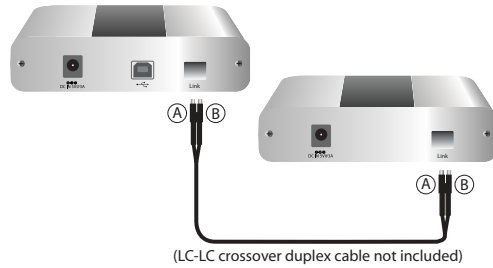
4-port USB 2.0 Fiber Extender System

Quick Start Guide



Before you get started, ensure that all the drivers required for your USB device(s) are installed.

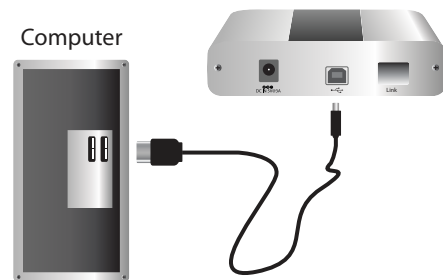
- 1 Place extenders where desired and connect the fiber link extension cable to the Link ports on the local extender and remote extender.



(LC-LC crossover duplex cable not included)

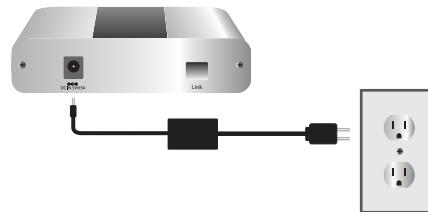
Max 500m multimode fiber for RG2224
Max 10km singlemode fiber for RG2244

- 2 Connect the local extender to the computer using the included USB cable.

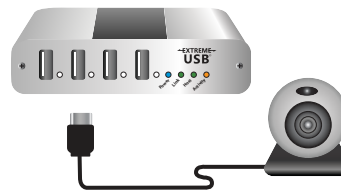


Note: Power adapter is not required at the local extender for normal operation.

- 3 Connect the remote extender to the AC adapter and plug into a power source.



- 4 Attach USB device(s) to the remote extender.



Includes the ExtremeUSB® suite of features:



- Transparent USB extension
- True plug and play; no software drivers required
- Works with all major operating systems: Windows®, Mac OS X®, and Linux®