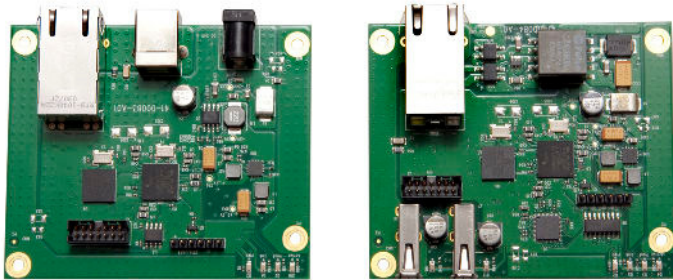




# LEX/REX Turnkey 2212

## Cat 5 USB 2.0 Extender with Remote Power

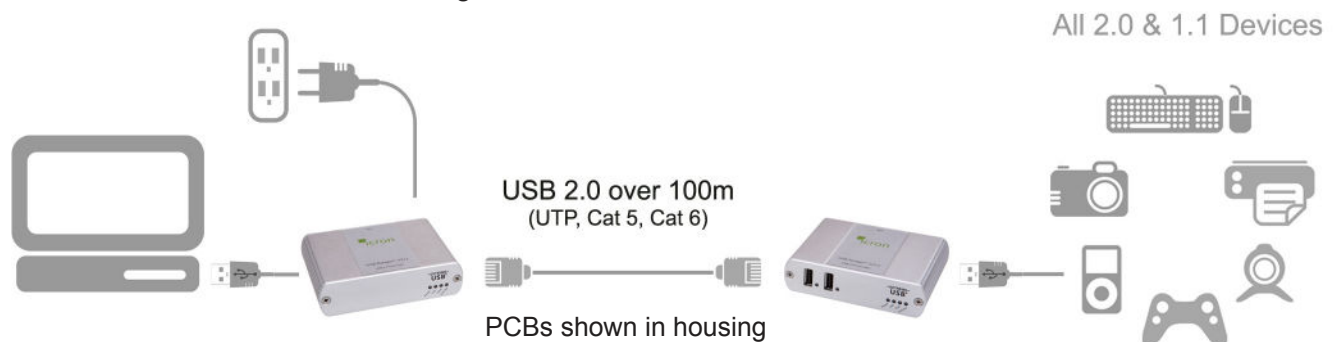


LEX/REX Turnkey 2212 extends USB 2.0 beyond the desktop up to 100m over standard Cat 5 cable using ExtremeUSB® technology.

## LEX/REX Turnkey 2212 Features

**LEX/REX Turnkey 2212 hardware is ideal for OEM integration of ExtremeUSB® technology.**

- System delivers power to remote hub over Cat 5 extension link simplifying installation and eliminating the need for AC power close to the remote unit.
- Turnkey hardware provides a complete, working ExtremeUSB® solution without housing for integration into custom housings or larger systems.
- Powered by ExtremeUSB®. Long reach USB 2.0 enabled by Icron's LionsGate™ USB 2.0 Extension ASIC.
- Extends USB 2.0 high-speed and USB 1.1 (low-speed, full speed) devices up to 100m over Cat 5 cable.
- Operates with USB 2.0 high-speed host controllers and USB 1.1 classic hosts.
- Supports all USB device types: Control, Interrupt, Bulk and Isochronous at up to 480Mbps.
- True plug and play, ready to operate right out of the box. No new driver installation required.
- Supports all major operating systems including Windows®, Mac OS®, and Linux®.
- Integrated hub provides two USB 2.0 ports. Number of devices can be increased using additional USB hubs.
- Remote unit provides standard 500mA to each port.
- Ideal for a wide variety of USB devices, from printers, scanners, hard drives, and audio devices, to touch screens, web cams, and game controllers.



## Ordering Information

The LEX/REX Turnkey 2212 system requires a LEX and REX unit, and a power supply unit located at the LEX. LEX/REX Turnkey 2212 components can be ordered individually to complete an OEM system as desired.

Name	Part Number	Description
<b>Modules</b>		
Ranger 2212 LEX	10-00151	USB Ranger 2212 LEX Module, complete with housing, no power supply
Ranger 2212 REX	10-00152	USB Ranger 2212 REX Module, complete with housing, no power supply
<b>Turnkey PCBs</b>		
Turnkey 2212 LEX	10-00161	Turnkey 2212 LEX PCB, without housing
Turnkey 2212 REX	10-00162	Turnkey 2212 REX PCB, without housing
<b>Power Adapters</b>		
Power Adapter	21-00054	24V 1A, International (100-240V) Power Adapter
Power Cord	21-00055	Power Cord for 21-00054, North American Plug
Power Cord	21-00056	Power Cord for 21-00054, European Plug
Power Cord	21-00057	Power Cord for 21-00054, UK Plug
Power Cord	21-00058	Power Cord for 21-00054, Australian Plug

## Product Specifications

Range	330 ft (100m) over Cat 5e (or better) cable
LEX unit USB connector	1 x USB Type B
LEX unit Link connector	1 x RJ45
REX unit Link connector	1 x RJ45
REX unit USB connector	2 x USB Type A
Power adapter Maximum Rating	24V DC @ 1A (LEX only)
Current available to USB at REX	2 x 500mA
Operating temperature range	0°C to 50°C
LEX and REX unit dimensions	3.94" x 2.99" x 1.02" (100 mm x 76 mm x 26 mm)
LEX and REX PCB dimensions	3.35" x 2.81" x 0.65" (85 mm x 71.5 mm x 16.5 mm)
Turnkey PCB weights	LEX 0.09 lbs. (40 grams), REX 0.11 lbs. (50 grams)
Turnkey PCB with housing weights	LEX 0.40 lbs. (180 grams), REX 0.42 lbs. (190 grams)
Regulatory testing	FCC (Class B), IC (Class B), CE (Class B)
ESD Rating	EMC EN-61000-4-2:2001 4kV Contact, 8kV Air

Specifications subject to change without notification

Contact [sales@icron.com](mailto:sales@icron.com) for more information.