

# Quick Start Guide

## Package Contents:

- USB 3.0 Spectra 3022 LEX
- USB 3.0 Spectra 3022 REX
- Locking AC Power Adapter
- Country Specific Power Cord
- USB 3.0 Cable
- Quick Start Guide/Warranty

Refer to the complete user guide online at:

[www.icron.com/3022](http://www.icron.com/3022)

For technical support visit:

[www.icron.com/support](http://www.icron.com/support)

[www.icron.com](http://www.icron.com)

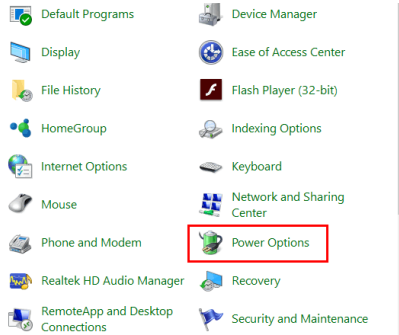


Before you get started, ensure that all the drivers required for your USB device(s) are installed noting this product does not support USB 1.1 or 2.0 devices.

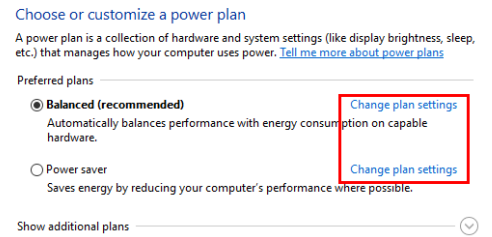
LEX = Local Extender, REX = Remote Extender

**1** In your computer settings, disable the **Suspend** feature.

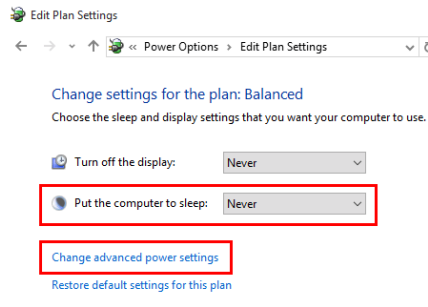
a) For Windows, open the **Control Panel**, then select **Power Options**.



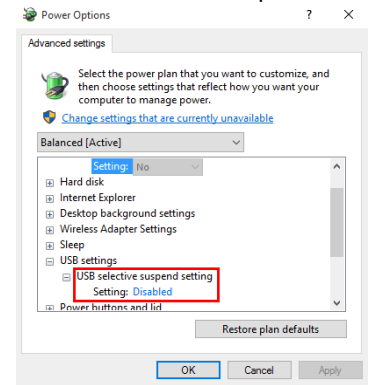
b) For each of the plans listed, click on **Change plan settings**.



c) Select **Never** for **Put the computer to sleep** for all the configurations presented. Then click **Change advanced power settings**.

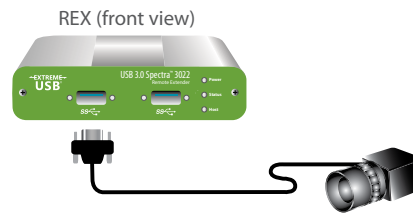


d) Expand **USB settings**. Expand **USB selective suspend setting**. Select **Disabled** for all options listed.



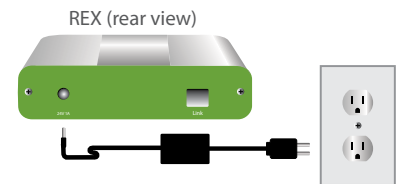
For more details and steps to disable your computer's suspend feature, refer to the online Spectra 3022 user guide.

**2** Place the REX where desired and attach USB 3.0 device(s) to the REX.

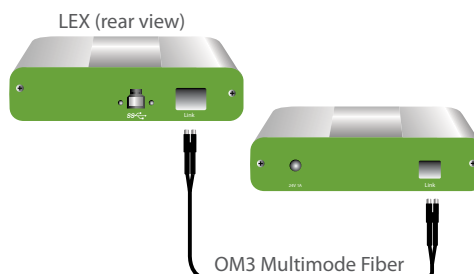


Note: AIA USB3 Vision™ locking USB connectors supported.

**3** Power the REX with the included adapter and tighten the locking ring.

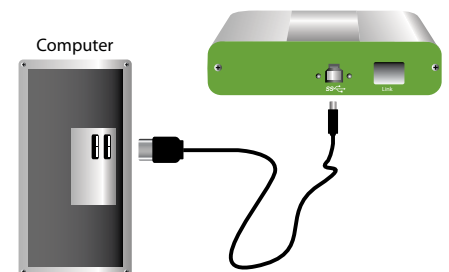


**4** Remove the white sticker from the back of the LEX (if still affixed). Directly connect the LEX and REX with a Duplex LC crossover multimode fiber cable (not included).



Max. distance between LEX and REX: Up to 50m with USB 3.0 storage type devices and up to 100m when using USB 3.0 bulk traffic cameras.

**5** Connect the LEX to a computer with the included USB cable.



# Certification, Compliance and Warranty Information

## FCC Radio Frequency Interference Statement Warning

This device complies with part 15 of the FCC Rules. Operation is subject to the following two conditions: (1) this device may not cause harmful interference, and (2) this device must accept any interference received including interference that may cause undesired operation.

## CE Statement

We, Icron Technologies Corporation, a Maxim Integrated brand, declare under our sole responsibility that the USB 3.0 Spectra™ 3022, to which this declaration relates, is in conformity with European Standards EN 55024, EN 55032, EN 61000, EN 62368-1 and RoHS Directive 2011/65/EU + 2015/863/EU.

## IC Statement

This Class B digital apparatus complies with Canadian ICES-003.

## WEEE Statement

The European Union has established regulations for the collection and recycling of all waste electrical and electronic equipment (WEEE). Implementation of WEEE regulations may vary slightly by individual EU member states. Please check with your local and state government guidelines for safe disposal and recycling or contact your national WEEE recycling agency for more information.

## Product Operation and Storage

Please read and follow all instructions provided with this product and operate for intended use only. Do not attempt to open the product casing as this may cause damage and will void warranty. Use only the power supply provided with this product. When not in use, product should be stored in a dry location between -20°C and 70°C. Detailed product user guides are available online at [www.icron.com](http://www.icron.com).

## Limited Hardware Warranty

Icron warrants that any hardware products accompanying this documentation shall be free from significant defects in material and workmanship for a period of two years from the date of purchase. Icron's hardware warranty extends to Licensee, its customers and end users. The warranty does not include repair of failures caused by misuse, neglect, accident, modification, operation outside a normal operating environment, service of the device by non-authorized servicers or a product for which Icron is not responsible.

## Hardware Remedies

Icron's entire liability and the Licensee's exclusive remedy for any breach of warranty, shall be, at Icron's option, either: (a) return of the price paid, or (b) repair or replacement of hardware, which will be warranted for the remainder of the original warranty period or 30 days, whichever is longer. These remedies are void if failure of the hardware has resulted from accident, abuse or misapplication.

## Limitation of Liability

The hardware warranty set forth in this agreement replaces all other warranties. Icron expressly disclaims all other merchantability and fitness for a particular purpose and non-infringement of third-party rights with respect to the hardware.

Icron dealer agent, or employee is not authorized to make any modification, extension, or addition to this warranty. Under no circumstances will Icron, its suppliers or licensors be liable for any costs of procurement or substitute products or services, lost profits, loss of information or data, or any other special, indirect, consequential or incidental damages arising in any way out of the sale of, use of, or inability to use Icron product or service, even if Icron, its suppliers or licensors have been advised of the possibility of such damages. In no case shall Icron, its suppliers and licensors' liability exceed the actual money paid for the products at issue.

Since some jurisdictions do not allow the limitation of implied warranties of liability for incidental, consequential, special, or indirect damages, the above limitation may not always apply. The above limitations will not apply in case of personal injury where and to the extent that applicable law requires such liability.

## Obtaining Warranty Service

To obtain warranty service, you must contact Icron within the warranty period for a Return Material Authorization (RMA) number. Icron will not accept returns without an authorized RMA number. Be sure to include the serial numbers of the LEX unit and REX unit in any of your email correspondence. Package the product appropriately for safe shipment and mark the RMA number on the outside of the package. The package must be sent prepaid to Icron Technologies Corporation. We recommend that you insure or send it by a method that provides package tracking. The repaired or replaced item will be shipped to you, at Icron's expense, not later than thirty days after Icron receives the defective product.

Address to return product: Icron Technologies Corporation  
Att: RMA Coordinator  
4664 Lougheed Hwy., Suite 221  
Burnaby, BC V5C 5T5 Canada



©2021 Icron | A Maxim Integrated Brand. All rights reserved. Icron Technologies Corporation, the Icron logo and products referred to herein are either the trademarks or the registered trademarks of Icron. All other trademarks are property of their respective owners. Icron assumes no responsibility for errors that may appear in this document. Information contained herein is subject to change without notice. ♻️

Warranty/RMA Inquiries: [www.icron.com/support](http://www.icron.com/support)

[www.icron.com](http://www.icron.com)

