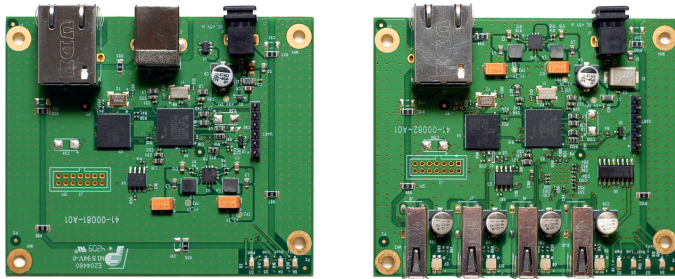




# LEX/REX Turnkey 2204

## Cat 5 USB 2.0 Extender

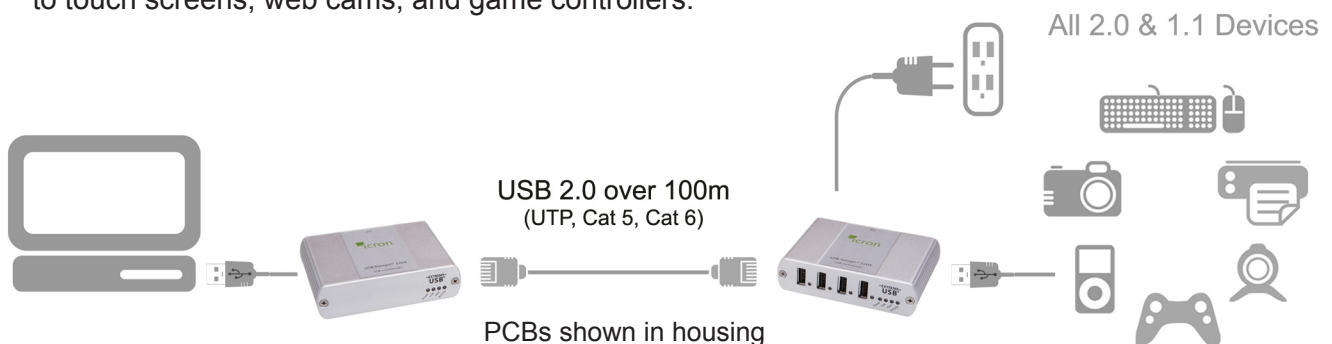


LEX/REX Turnkey 2204 extends USB 2.0 beyond the desktop up to 100m over standard Cat 5 cable using ExtremeUSB® technology.

## LEX/REX Turnkey 2204 Features

**LEX/REX Turnkey 2204 hardware is ideal for OEM integration of ExtremeUSB® technology.**

- Turnkey hardware provides a complete, working ExtremeUSB® solution without housing for integration into custom housings or larger systems.
- Powered by ExtremeUSB® Long reach USB 2.0 enabled by Icron's LionsGate™ USB 2.0 Extension ASIC.
- Extends USB 2.0 high-speed and USB 1.1 (low-speed, full speed) devices up to 100m over Cat 5 cable.
- Operates with USB 2.0 high-speed host controllers and USB 1.1 classic hosts.
- Supports all USB device types: Control, Interrupt, Bulk and Isochronous at up to 480Mbps.
- True plug and play, ready to operate right out of the box. No new driver installation required.
- Supports all major operating systems including Windows®, Mac OS®, and Linux®.
- Integrated hub provides four remote USB 2.0 ports. Number of devices can be increased using additional USB hubs.
- AC power adapter at remote unit provides standard 500mA to each USB port.
- Power adapter at local unit is not required for normal operation.
- Ideal for a wide variety of USB devices, from printers, scanners, hard drives, and audio devices, to touch screens, web cams, and game controllers.



## Ordering Information

The LEX/REX Turnkey 2204 system includes a LEX and REX unit and a power supply unit located at the REX. LEX/REX Turnkey 2204 components can be ordered individually to complete an OEM system as desired.

Name	Part Number	Description
------	-------------	-------------

### Modules

Ranger 2204 LEX	10-00153	USB Ranger 2204 LEX Module, complete with housing, no power supply
Ranger 2204 REX	10-00154	USB Ranger 2204 REX Module, complete with housing, no power supply

### Turnkey PCBs

Turnkey 2204 LEX	10-00163	Turnkey 2204 LEX PCB, without housing
Turnkey 2204 REX	10-00164	Turnkey 2204 REX PCB, without housing

### Power Adapters

Power Adapter	21-00053	5V 3A, International (100-240V) Power Adapter
Power Cord	21-00055	Power Cord for 21-00053, North American Plug
Power Cord	21-00056	Power Cord for 21-00053, European Plug
Power Cord	21-00057	Power Cord for 21-00053, UK Plug
Power Cord	21-00058	Power Cord for 21-00053, Australian Plug

## Product Specifications

Range	330 ft (100m) over Cat 5e (or better) cable
LEX unit USB connector	1 x USB Type B
LEX unit Link connector	1 x RJ45
REX unit Link connector	1 x RJ45
REX unit USB connector	4 x USB Type A
Power adapter Maximum Rating	5V DC @ 3A
Current available to USB at REX	4 x 500mA
Operating temperature range	0°C to 50°C
LEX and REX unit dimensions	3.94" x 2.99" x 1.02" (100 mm x 76 mm x 26 mm)*
PCB dimensions	3.35" x 2.81" x 0.65" (85 mm x 71.5 mm x 16.5 mm)*
Turnkey PCB weights	LEX 0.11 lbs. (50 grams), REX 0.13 lbs. (60 grams)
Turnkey PCB with housing weights	LEX 0.42 lbs. (190 grams), REX 0.44 lbs. (200 grams)
Regulatory testing	FCC (Class B), IC (Class B), CE (Class B)
ESD Rating	EMC EN-61000-4-2:2001 8kV Contact, 16kV Air

Specifications subject to change without notification.

\*Weights are approximate.

Contact [sales@icron.com](mailto:sales@icron.com) for more information.

©2010 Icron Technologies  
Corporation US Patents  
6,381,666 B1 & 7,149,833

Document #90-00633-A02

4664 Lougheed Highway, Suite 221, Burnaby, BC V5C 5T5  
T: 604-638-3920 F: 604-638-3930 [sales@icron.com](mailto:sales@icron.com)



[www.icron.com](http://www.icron.com)